

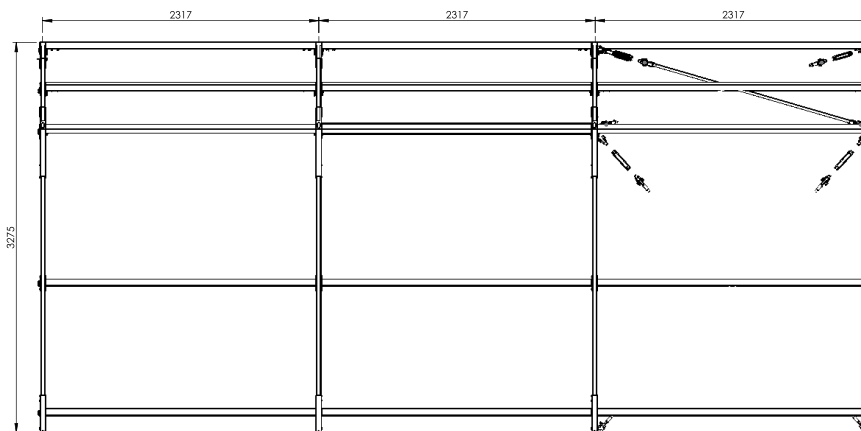
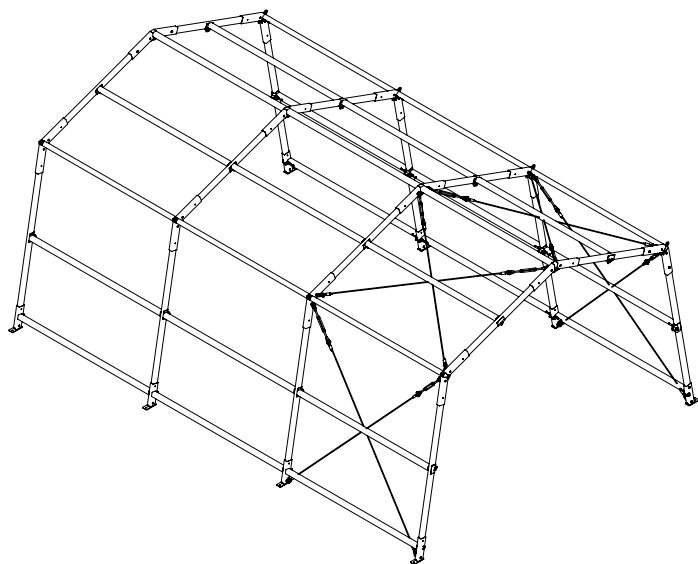
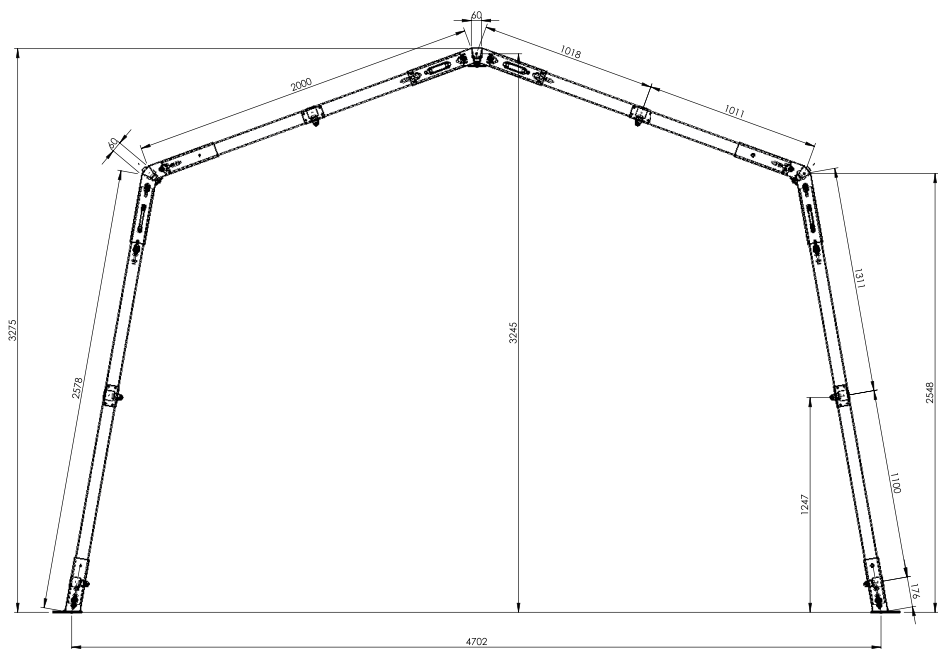
NUPWU TENT

NUPWU is a durable tent engineered for extended storage of large and bulky equipment, ideal for serving as a reusable mobile garage in areas where constructing permanent buildings isn't feasible.

- The tent frame utilizes 40 x 40 mm aluminum profiles with steel connectors, all galvanized and powder coated for maximum durability.
- The tent membrane is crafted from high-strength PVC fabric, ranging from 500 to 950 g/m² depending on the tent size.
- The fabric is gas tight, flame retardant, and UV-resistant to ensure longevity and safety.
- An optional hard floor, capable of withstanding pressures up to 60 t/m², is available as an additional component.



NUPWU TENT



CHECK
ONLINE

