

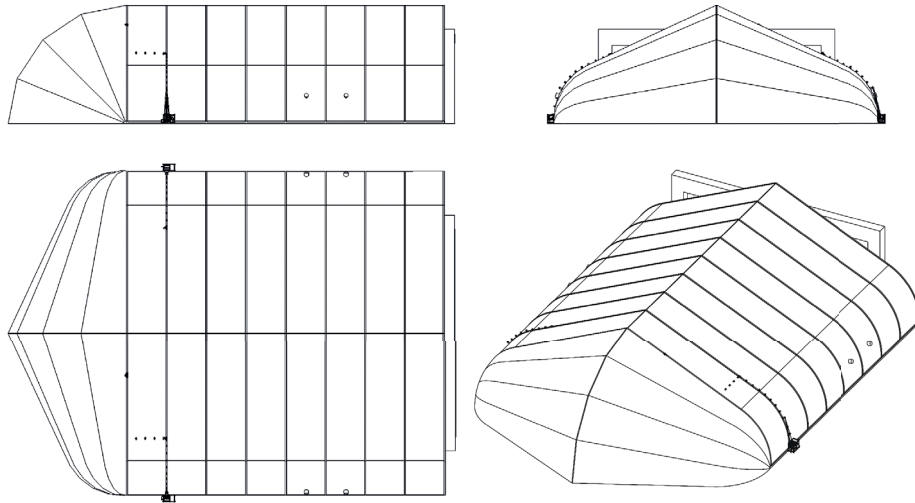
CLAMSHELL DOOR

The Clamshell System functions as a full-width, tensioned door and is commonly used in military applications, particularly for aircraft hangars. To ensure efficient performance, the Clamshell Door is operated by an automatic, electric (400V) winch system, allowing you to adjust the size of the opening. The modular design of the Clamshell System is an ideal solution when you need ample space to accommodate large military vehicles, aircraft and equipment.

- **Modular Design:** The size of the opening can be adjusted to provide ample space to accommodate large military vehicles, aircraft and equipment.
- **Efficient Performance:** Operated through an automatic, electric (400V) winch system.
- **Superior Reliability:** In case of electric winch failure or power outage, the door can be opened manually.



CLAMSHELL DOOR



CHECK
ONLINE

